



Linwood Public Schools

# Curriculum & Instruction Update

August 25, 2021



## 1. Curriculum Revisions

- Science
- Visual & Performing Arts
- World Language
- Career Readiness, Life Literacies & Key Skills

These standard revisions were initially scheduled by the NJDOE to be implemented September 2021, but have been rescheduled for implementation in September 2022. Teachers have made the bulk of revisions to begin this school year, but will work over the course of the year to make any needed adjustments.

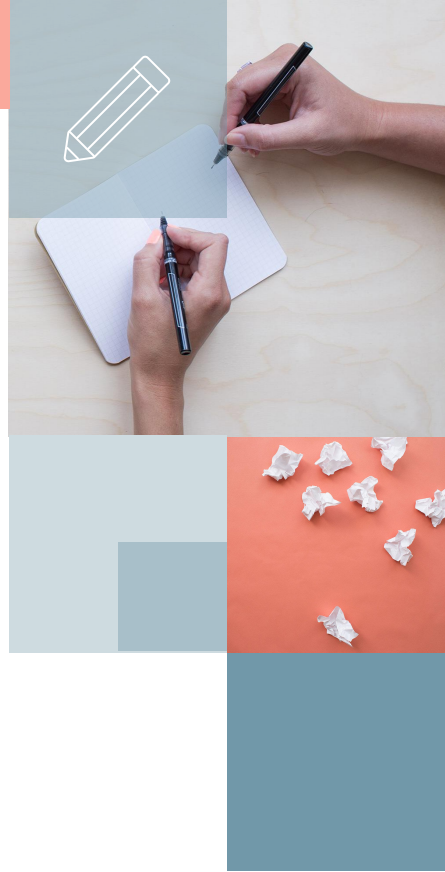
# Curricular Revision Details

## Science

Teachers worked to update all standards to NJSLS-Science which were modeled after NGSS standards. One change was the addition of climate change across grade levels. The district also added a new online science resource for teachers, Generation Genius. Teachers are focusing on more engaging, interactive and lab-based science lessons.

## Visual & Performing Arts

Music and Art teachers worked to update the standards to NJSLS- VPA which were modeled after the national standards. The teachers collaborated to create a more cohesive curriculum and ensure a smooth transition from elementary to middle school. Teachers developed the curriculum to reflect the four domains of the arts: creating, performing/presenting/producing, responding, and connecting.



# Curricular Revision Details

## World Language

Teachers worked to update all standards to NJSLS-WL. The addition of performance level “novice low” was addressed across the grade levels. The world language teachers worked together to ensure standards were being met in all grades with no gaps in critical understandings. At the lower levels, the goal is for students to have exposure to the language and gain knowledge of basic greetings and everyday language. As they move towards middle school, students will build their acquisition of words and phrases, still working in the novice levels.

## Career Readiness, Life Literacies, & Key Skills

The NJSLS-CRLLKS standards encompass learning in many content areas. The four major areas are Financial Literacy, Career Awareness, Exploration, Preparation & Training, Career Readiness Education, and Life Literacies and Key Skills. This summer teachers tackled Financial Literacy standards and Career & Life Literacies as it applies to STEAM and computers. Students at Belhaven will have a Financial Literacy course in all grade levels.







## 2. District Planning

- Gifted & Talented Committee
- Diversity, Culture & Equity Committee
- Belhaven Explorations Planning
- Resiliency Teams

These groups met throughout the summer to plan for meeting state education bills/mandates and meeting the needs of all students.

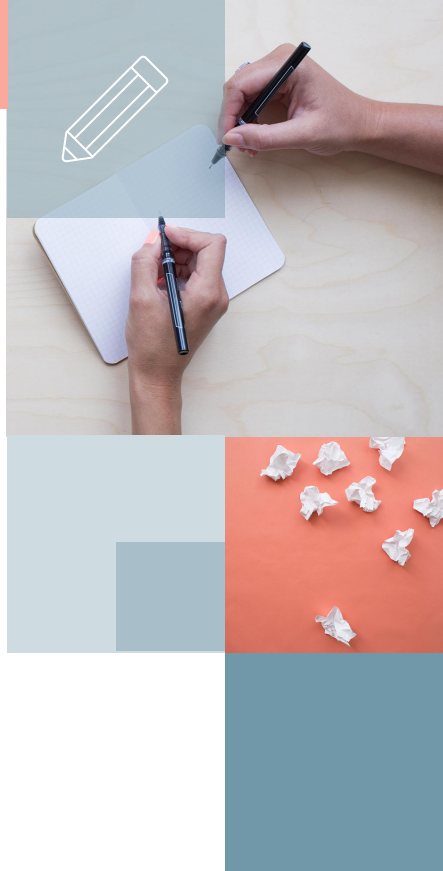
# District Planning Details

## Gifted & Talented Committee

The committee is analyzing and updating the gifted and talented selection process as well as expectations and criteria for students in the G&T programs. The group will continue working on incorporating live project-based tasks into the selection process. The committee has discussed professional development for all teachers and will work throughout the year to continue developing the gifted and talented programming for the district in line with the Strategic Plan.

## Diversity, Culture & Equity Committee

The committee reviewed mandates and bills pertaining to diversity, culture, and equity (S1569, A4454, AMISTAD, & embedded SS, H&PE standards). Subjects and lessons that currently address these topics were identified, and other areas/activities that aligned to the standards were developed for implementation this year and beyond. The committee is continuing to develop and provide teachers with a resource bank of lessons and materials that align to the NJSLs. This group will meet throughout the school year.



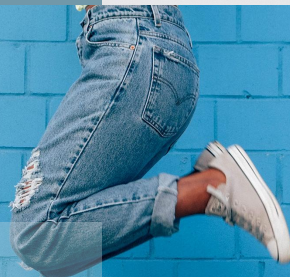
# District Planning Details

## Belhaven Explorations

Teachers met to discuss and plan changes to the Explorations period. Financial Literacy courses will be included during this time as well as interventions and gifted & talented meetings. As the year progresses, elective-style classes will be offered. The goal of the Explorations period is to offer a more well-rounded school experience and allow students to express their abilities and interests in areas beyond academics.

## Resiliency Teams

A major focus for returning to school is the mental health of our students and staff. Teams of teachers from each building attended a 3-day training on Resiliency, learning the latest research, practices and strategies addressing trauma sensitive and trauma responsive environments. The teams met another 2 days in-district to plan for implementation of resilience activities for staff and students. This work will continue throughout the school year.





### 3. Teacher Training

- Resiliency (District)
- Writer's Workshop (Belhaven)
- Guided Reading (Seaview)

Future professional development will include math instructional practices, data analysis to drive instruction, differentiation, and mental health among other topics.



## 4. District & State Testing

Local benchmark assessments will be given at the beginning of the school year to assess the current level of students.

Assessments may include but are not limited to:

- LinkIt benchmarks in ELA & Math
- Fountas & Pinnell Benchmark reading level
- Phonics & spelling assessments
- Scholastic Reading Inventory
- Math Prerequisite skills assessment
- Writing benchmark

# Start Strong Assessments

## (State Testing Window: September 13- October 22)

### Fall 2021 Start Strong: Overview

#### Brief



- The test can be given in a single class period (45–60 minutes).
- Administration set-up and procedures are similar to traditional state assessments, with some exceptions.

#### Standards Aligned



- Aligned to a small set of standards from the year before to help educators understand the level of support students need at the beginning of the school year.

#### Given Across Content Areas



- English language arts (ELA) grades 4–10;
- Mathematics grades 4–8, Algebra I, Geometry, and Algebra II; and
- Science (6, 9 & 12).

#### Flexibly Given



- Seamless online delivery through the assessment administration platform.
- Provides immediate results to educators.

If you have any questions please contact me:

**Nicole Sapello**

Supervisor of Curriculum & Instruction

[nicolesapello@linwoodschools.org](mailto:nicolesapello@linwoodschools.org)

**THANKS**

